



ASHHURST SCHOOL

EKE TAUMATA



NEWSLETTER 2024 WEEK 2

TERM 2

Nāku iti noa, na

It is lovely to be back in the swing of things for Term 2 and be able to get out and watch some of the winter sports that have started over the past few weeks. We thank all staff and whānau who have stepped up to support these teams and look forward to a positive season for all.

On the staffing front, we farewelled Mrs Hinton at the end of last week, who is heading off on maternity leave. We wish Ashleigh and her family the best for their new arrival.

Term Two Teacher Only Days

This term, we have two teacher-only days. The first TOD day (31st May, which is the Friday before Kings Birthday public holiday) is a ministry-informed day where staff will focus on professional development in structured literacy and creating resources to support the programme. As many of you may know, Structured Literacy is now mandatory for schools to implement in the 2025 school year. We are confident in meeting those deadlines as we are well into professional development. The last day of the term (5th of July) is an in-school teacher-only day. These days need to be made up, hence why we will finish later in the year to ensure our school is open for instruction per the ministry requirements. Professional development will continue with structured literacy in our Year 1-4 teams and the Writer's Toolbox in Years 5-8. We will be engaging with professional development providers on those days at school.

We are incredibly excited by the progress of our structured literacy programmes and the Writer's Toolbox. We want to share these practices with our parents to keep them informed about what is happening at school.

Below are sessions for parents to come along and learn more about the programmes running at school.

Structured Literacy / Writer's Toolbox Parent Information Sessions

On Thursday 13th June we will be running information sessions about literacy programmes we are currently implementing in our school. If you have questions about Structured Literacy (Years 1-4) or Writing (Years 5-8), please come along and see how we teach these areas of Literacy and ask any questions you may have. We are offering three different session times (each session will cover the same content) to allow parents to attend both sessions from the Junior and Senior school if they wish.

The session times are:

Session 1

Thursday 13th June 2:15pm - 3:00pm
Structured Literacy Session (Years 1-4): Run in Room 6
Writer's Toolbox Session (Years 5-8): Run in Room 2

Session 2

Thursday 13th June 5:00pm - 5:45pm
Structured Literacy Session (Years 1-4): Run in Room 6
Writer's Toolbox Session (Years 5-8): Run in Room 2

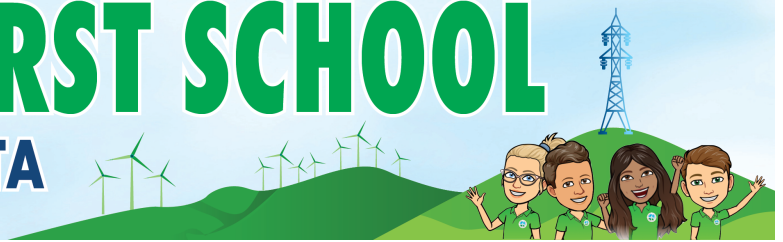
Session 3

Thursday 13th June 5:45pm - 6:30pm
Structured Literacy Session (Years 1-4): Run in Room 6
Writer's Toolbox Session (Years 5-8): Run in Room 2



ASHHURST SCHOOL

EKE TAUMATA



TECH Open Day

We are happy to announce that on Thursday the 23rd of May, between 11am and Noon, we will be opening the doors to our tech spaces to allow whānau to come and see what our Whārite students have been learning. Our senior students will have their end products on display and will be able to share their learning with you. We would love you to come along and have a look at what we now offer in this space.

Cross Country

Our big school event this term is Cross Country, which will be held on the 22nd of May. This is such a great event, and we love seeing tamariki challenge themselves. All classes practice regularly, and our plan is for all students to take part in a run-through down at the Domain to familiarise themselves with the track, as there are a few changes this year.

Peer Mediators

We are excited to announce that Peer Mediation will start in Week 5 of this term. Peer Mediation is a structured process that uses a neutral person, the mediator, to help those in disagreement come up with their own solutions for a win/win outcome. It is a voluntary process to constructively manage low-level disagreements. The mediator facilitates the mediation process to support their peers in resolving their own problems.

Students working in the role of 'peer mediator', are trained in conflict resolution skills. We have a great group of peer mediators in our first cohort, who have undergone training over the last 6 weeks to prepare them for their important role in the school community. They will be on duty from the beginning of Week 5 this term.

Seasons

Seasons for Growth is an 8-week programme for children, young people, or adults who have experienced grief or loss. Sessions are run in small groups and last 45 minutes to one hour, depending on the group's age. As an evidence-based and highly regarded programme, Seasons for Growth has a unique and important role in supporting mental health within your school community. Designed as a support programme for 5-12 year olds who are missing someone significant in their lives (usually but not always due to divorce/separation of parents, the death of a loved one or moving town). If you think your child would benefit from this programme, please contact Whaea Kaz on kgiles@ashhurst.school.nz.

School Internet Upgrade and the Phone System

We have an upgrade of the school network from the 22nd to 24th of May. Please be prepared on those days for some or no internet and this may have an impact on the school phones in the office. During this time if you are unable to contact the office and you need to get hold of someone, please contact Heath on 0278616913 or Kaz on 0274450772.

Heath Chittenden
Principal
PN East Kahui Ako
Co-Lead Principal

Karyn Giles
Deputy Principal



ASHHURST SCHOOL

EKE TAUMATA



Notices

Ashhurst School Calendar & Term Dates 2024

Term 2

Monday 29 April - Friday 5 July.

Tuesday 21st May - School Photos

Wednesday 22 May - Cross Country

Thursday 23 May - PTA Disco

Friday 31st May - MOE Teacher Only Day

Monday 3rd June - King's Birthday

Friday 28th June - Matariki

Friday 5th July - Teacher Only Day

Term 3

Monday 22 July - Friday 27 September

Friday 27th September - Teacher Only Day

Term 4

Monday 14 October - Friday 20 December

Monday 28 October - Labour Day

*There will be one additional day in 2024.
This will be between October 21st to the
15th of November.*

Please only use the disability car park if you have a mobility card. It is not a drop off zone, it is intended only for those that need it.

Thank you

School Photos

School photos will be taken in week 4, on Tuesday 21st May. Order envelopes have been sent out with students this week. If you wish to order a family group photograph envelopes are available at the school office. You can order and pay for photos online at -

<https://orders.lcscott.co.nz/ordering/with?key=43WVJTPB>

Please note that family photos must be pre-ordered before photo day to ensure the photo is taken.

If ordering online envelopes do not need to be returned to school.

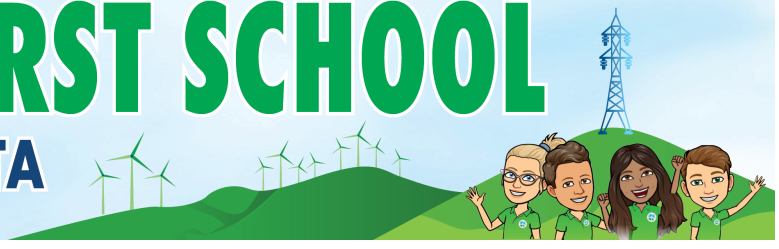
Out of Zone Applications

The board of Trustees invites applications from parents who wish to enrol their children at Ashhurst School in Term 3 2024. Enrolments at Ashhurst School are governed by an enrolment scheme, details of which are available from the school office or the school website. Applications are available on the Ashhurst School website: www.ashhurst.school.nz click on Enrolment. Please fill in both the enrolment form and the out-of-zone application form. The deadline for receipt of applications, for out of zone places is 3.00pm on Friday 21st June 2024. The exact number of places for out of zone students will depend on the number of applicants from students who live within the school's home zone. If the number of out of zone applications exceeds the number of places available, students will be selected by ballot. If a ballot is required, it will be held on Monday 24th June. Parents will be informed of the outcome of their applications by 3.00pm Tuesday 25th June 2024.



ASHHURST SCHOOL

EKE TAUMATA



Kelly Club Week 3

KELLY CLUB		THEME: Fab Fashion				Weekly Activities Plan
		Term 1 Week 3, 13th May 2024				Kelly Club Ashurst
	Monday	Tuesday	Wednesday	Thursday	Friday	
7:00 - 8:15 am	Paper Plane & Structured Free Time	Wearable Arts & Structured Free Time	Cup Towers & Structured Free Time	Kids Choice & Structured Free Time	Wearable Art & Structured Free Time	
8:15 - 8:30 am	Game: Simon Says	Game: Noodle Tag	Game: Rob the Nest	Game: Tissue Dance	Game: Wacky Relays	
3:00 - 3:10 pm	Sign In & Structured Free Time	Sign In & Structured Free Time	Sign In & Structured Free Time	Sign In & Structured Free Time	Sign In & Structured Free Time	
3:10 - 3:30 pm	Intro & Afternoon Tea Pikelets & Fruit	Intro & Afternoon Tea Crackers & Fruit	Intro & Afternoon Tea Sausage Rolls & Fruit	Intro & Afternoon Tea Sammies & Fruit	Intro & Afternoon Tea Savealays & Fruit	
3:30 - 3:45 pm	Game: Blindfolded Explorers	Game: All on One Side	Game: Midnight	Game: 4 Corner Dodgeball	Game: Turkey Tag	
	SPORT Goal Dodgeball	COOKING Designer Pizza	CRAFT Button Art	GAME Lucky Jacket	DISCOVERY Tie Dying	
3:45 - 4:30 pm						
4:30 - 4:35 pm	Tidy Up	Tidy Up	Tidy Up	Tidy Up	Tidy Up	
4:50 - 5:15 pm	Homework & Quiet Time	Homework & Quiet Time	Homework & Quiet Time	Homework & Quiet Time	Homework & Quiet Time	
5:15 - 6:00 pm	Game: Bom Bom Bom & Projects	Game: Catch the Dragon Tail & Projects	Game: Caterpillar Race & Projects	Game: Cloud Hopping & Projects	Game: Coin Rugby & Projects	

E: ashhurst@kellyclub.co.nz

kellyclub.co.nz/ashhurst

P: 021 215 7863

Saturday 25th May

Style me Bex!
Fashion Fundraiser & clothes swap

Bex Lintott
Personal Stylist

7pm Lytton Street School Hall, Feilding

An evening with Personal Stylist Bex Lintott **\$25**

Fashion stylist Bex Lintott shares her tricks, tips and tools on how to look amazing! Followed by a clothes swap!!

How it works:

On the night:
Arrive and grab a bubbles and some nibbles
Sit down and enjoy Bex share her style expertise
Watch the models bring her ideas to life
Clothes swap/bargain hunt

Before the night: If you want to earn tokens to shop
Clean out that closet and drop off quality clothes or fashion items (earrings, bags etc) that you no longer want.
Drop off: FEILDING -148 West Street (yellow house)- go up the drive and pop in the marked black bin.

(wake sure it is named so you can receive your tokens on the night)
Each item will give you a token to swap for another item.
If you have nothing to swap but find an item you like, you can pick it up for a bargain.

Purchase a ticket:
Email lmd3288@gmail.com or text/ph: 02102993591
Payment: 03-1395-0646029-001
Reference: last name and initial & phone number
Your name will be on a list at the door - Thankyou

All proceeds go to Max P for his FAHS Argentina hockey trip



2024 Palmerston North Brick Show

Two days of amazing LEGO® displays and interactive activities

Kings Birthday Weekend
1st June 9am - 5pm | 2nd June 9am - 4pm

\$5 Entry
EFTPOS Available

Arena 3
Pascal Street

Presented by: **WELL-LUG** | Sponsored by: **GO Media** | Supporting: **TOYWORLD**

Get Tickets at www.well-lug.nz/tickets



PALMERSTON INDOOR SPORTS ARENA

TERM TWO!!
May 10th to June 28th

JUNIOR LEAGUE

6-ASIDE MIXED NETBALL
FRIDAY AFTERNOONS FROM 4:00PM

YEAR 1-4 \$40
YEAR 5-6 \$288
YEAR 7-8 \$336
HIGHSCHOOL \$432

PRICING IS PER TEAM PER TERM

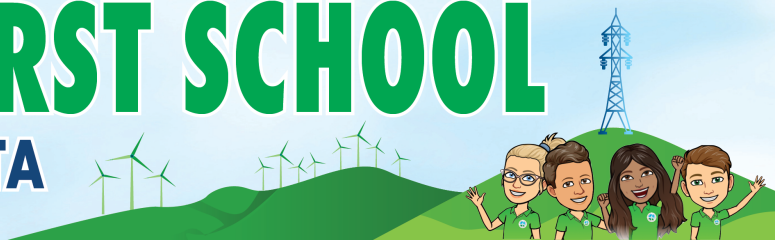
REGISTER NOW
hq@pisa.co.nz
021 064 5885





ASHHURST SCHOOL

EKE TAUMATA




Harrison Jones
Owner Operator

M: 021 114 6373
E: Oddjobjones21@gmail.com
Manawatu Region
www.oddjobjones.co.nz

*A good lookin' yard
doesn't need to be hard!*

- LANDSCAPING
- FENCING
- DECKS
- PERGOLAS
- WATER-BLASTING
- YARD CLEAN UP
- GUTTER CLEANING
- CONCRETE PREP

Welcome to

VILLAGE VALLEY

AUTOMOTIVE

Servicing all makes and models for the Ashhurst region

STIHL SHOP PALMERSTON NORTH

Phone: 06 358 6275
Email: palmerstonnorth@stihlshop.co.nz

OPENING HOURS
Mon-Fri: 8am - 5.30pm
Saturday: 8.30am - 1pm



Dat Lieu
Ph 021 044 7365
www.aegisoil.co.nz
Head office 0800 655 645

FRIEND & WISTRAND
COLLISION REPAIR CENTRE

674 Tremaine Avenue PO Box 4039 Palmerston North 4414
T: 06 357 2723 | E: office@friendandwistrand.co.nz

PANELBEATING • CHASSIS REPAIRS • SPRAYPAINTING

Taonui Ground Spreading

Our trucks are spread marked certified,
Tabula GPS Unit for accurate spread,
We can accommodate any size property.

Contact Paul
027 234 6521

We don't treat soil like dirt

Advertise your business
here - \$230 1 Year

Advertise your business
here - \$230 1 Year